

SYSTEMS TESTED AS PER



3rd Party Verified




SAINT-GOBAIN

CONTACT US:

E-mail: gyprocindia@saint-gobain.com

Toll Free: 1800 103 7897

Website: www.gyproc.in

**Fire Resistance Test of
Wall Assembly**

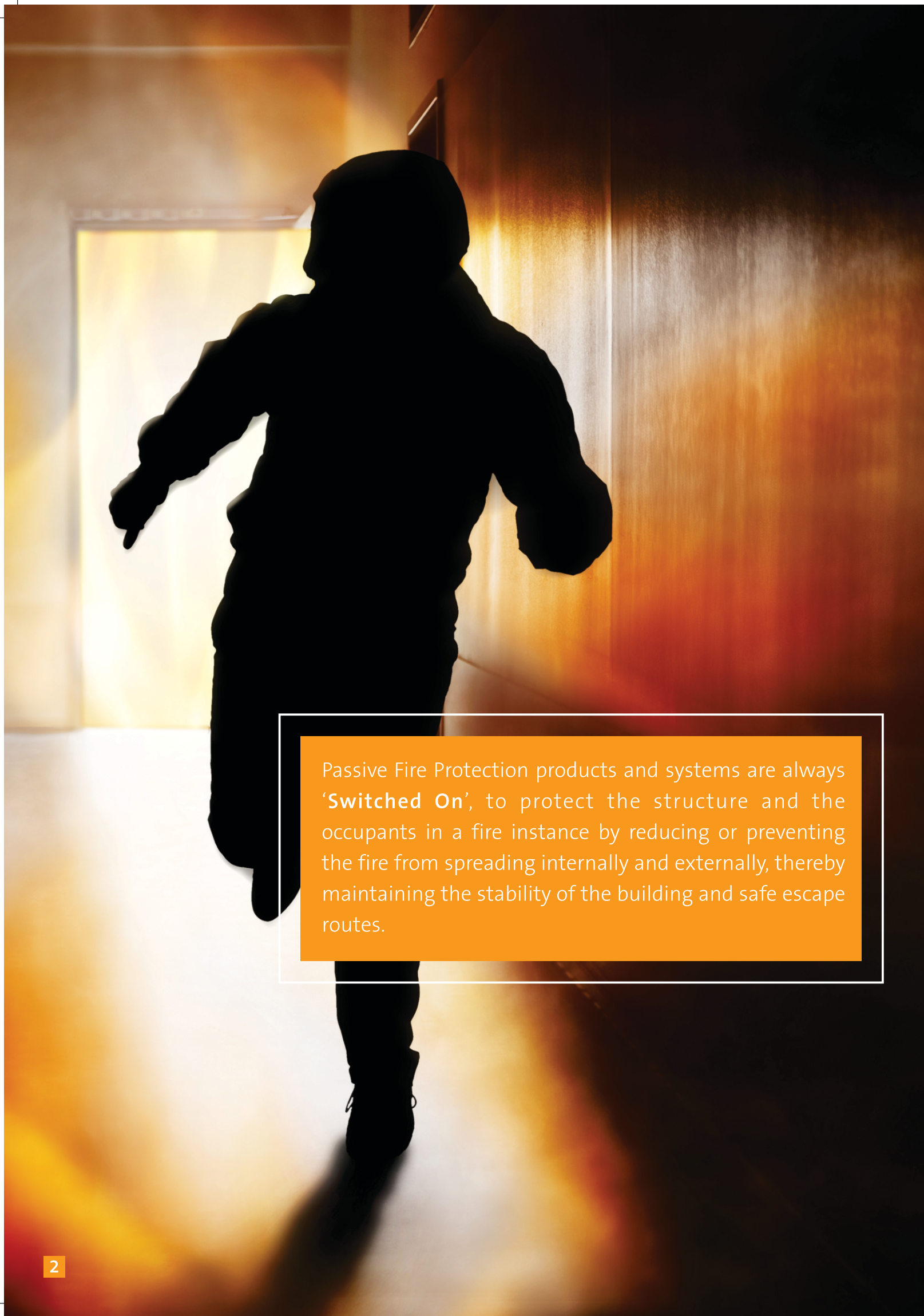


**Fire Safety Through Passive
Fire Protection**




SAINT-GOBAIN

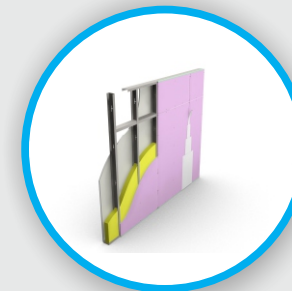




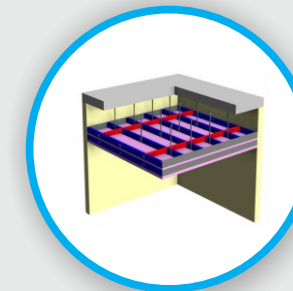
Passive Fire Protection products and systems are always **'Switched On'**, to protect the structure and the occupants in a fire instance by reducing or preventing the fire from spreading internally and externally, thereby maintaining the stability of the building and safe escape routes.

Solution Provider of Fire Safety Through Passive Fire Protection Systems

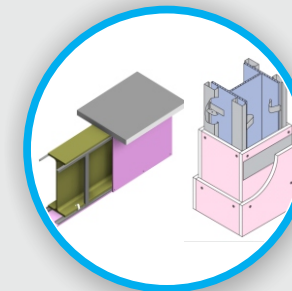
Our FIRE RATED OFFERING
ranges from 30 Min. to 4 Hrs.



WALL/PARTITION
30 Min. to 4 Hrs.

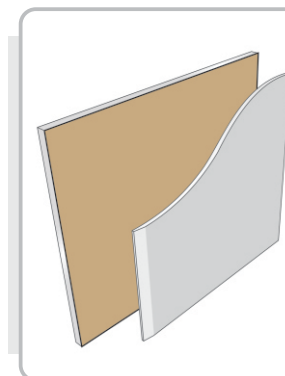


CEILING
30 Min. to 2 Hrs.



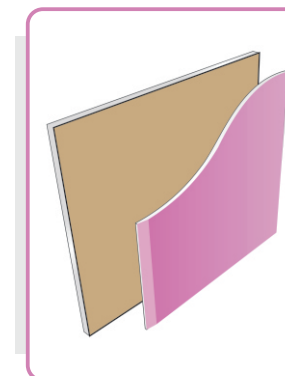
BEAM & COLUMN ENCASEMENT
30 Min. to 4 Hrs.

Gypsum Boards for Fire Rated Application



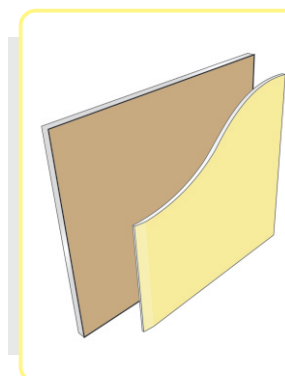
Gyproc® Plain Board

Standard Plasterboard.
For Fire Rated Application
where up to 60min is
applicable.



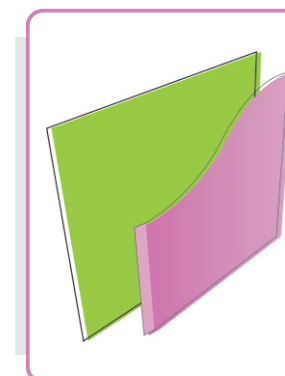
Gyproc® Fireline Board

Gypsum board with fire
resistive additives.
For Fire Rated Application
where High Level of Fire
Protection (more than
60min) is required.



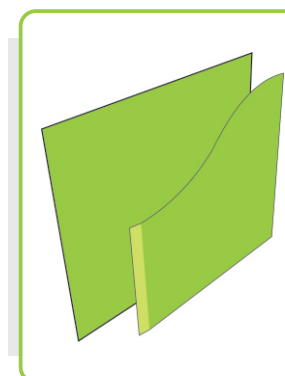
Gyproc® Duraline Board

13mm Gypsum Board with
dense core.
For Applications where High
Impact Resistance with up to
60min Fire Resistance is
required.



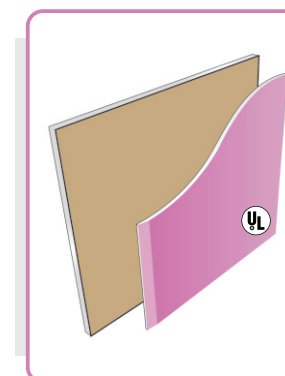
Gyproc® FRMR Board

Gypsum board with fire
resistive & water repellent
additives.
For Application where High
Level of Fire & Moisture
Resistance is required.



Gyproc® Core Board

19mm Gypsum board for
Fire Rated walls with
Moisture Protection
enclosing Shaft.



Gyproc ProRoc® FS

Is "Type C" Gypsum board
"UL Certified". Gypsum board
core is classified in
accordance with ASTM E-
136

Gyproc Fire Rated Wall Systems

30
min

Non-Loadbearing Wall System

One layer of 12.5 mm Gyproc® Plain Board applied vertically to either side of 70mm x 0.5mm G.I. Metal Framing spaced at 610mm center to center.

97 mm

Acoustics (Rw)	43
Max Reachable Height (mm) with 70mm metal stud	3800
Insulation	50mm with 20Kg/m ³



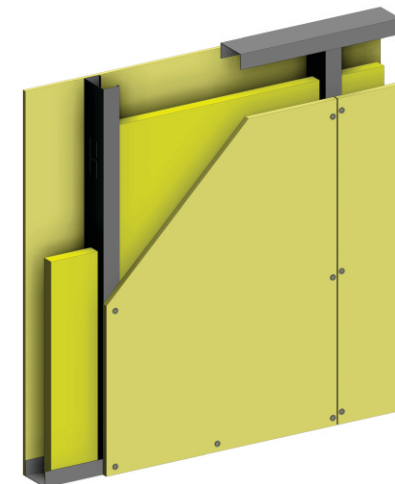
60
min

Non-Loadbearing Wall System

One layer of 13mm Gyproc® Duraline Board applied vertically to either side of 70mm x 0.5mm G.I. Metal Framing spaced at 610mm center to center.

98 mm

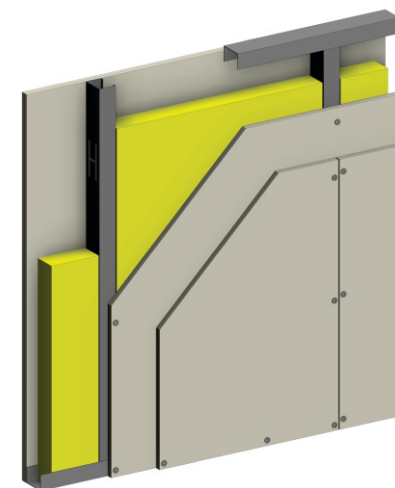
Acoustics (Rw)	48
Max Reachable Height (mm) with 70mm metal stud	3600
Insulation	50mm with 20Kg/m ³



Two layer of 12.5mm Gyproc® Plain Board applied vertically to either side of 48mm x 0.5mm G.I. Metal Framing spaced at 610mm center to center.

100 mm

Acoustics (Rw)	50
Max Reachable Height (mm) with 70mm metal stud	3400
Insulation	50mm with 20Kg/m ³



Gyproc Fire Rated Wall Systems

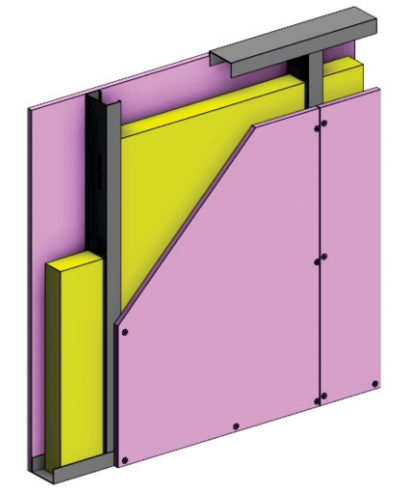
60
min

Non-Loadbearing Wall System

One layer of 15mm Gyproc® Fireline Board applied vertically to either side of 70mm x 0.5mm G.I. Metal Framing spaced at 610mm center to center.

102 mm

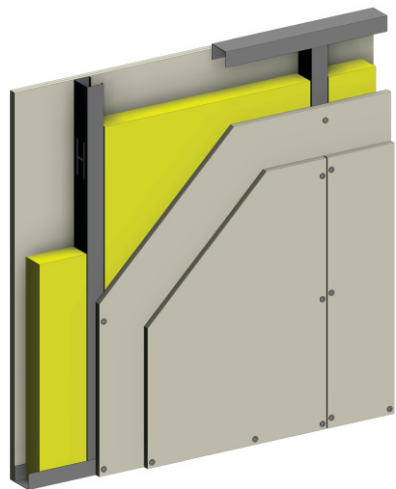
Acoustics (Rw)	48
Max Reachable Height (mm) with 70mm metal stud	3800
Insulation	50mm with 20Kg/m ³



Two layer of 12.5mm Gyproc® Plain Board applied vertically to either side of 70mm x 0.5mm G.I. Metal Framing spaced at 610mm center to center.

122 mm

Acoustics (Rw)	50
Max Reachable Height (mm) with 70mm metal stud	4600
Insulation	50mm with 20Kg/m ³



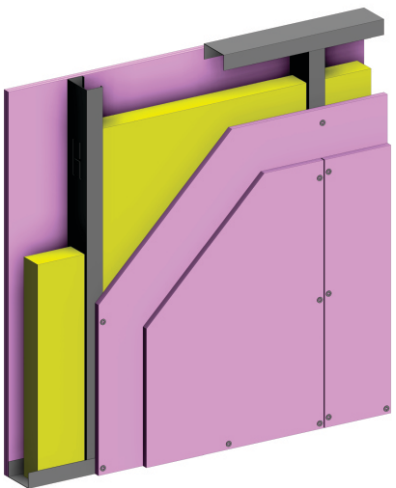
120
min

Non-Loadbearing Wall System

Two layers of 12.5mm Gyproc® Fireline Board applied vertically to either side of 48mm x 0.5mm G.I. Metal Framing spaced at 610mm center to center.

100 mm

Acoustics (Rw)	50
Max Reachable Height (mm) with 70mm metal stud	3400
Insulation	50mm with 20Kg/m ³



Gyproc Fire Rated Wall Systems

120
min

Non-Loadbearing Wall System

Two layers of 12.5mm Gyproc® Fireline Board applied vertically to either side of 70mm x 0.5mm G.I. Metal Framing spaced at 610mm center to center.

Two layers of 15mm Gyproc® Fireline Board applied vertically to either side of 70mm x 0.5mm G.I. Metal Framing spaced at 610mm center to center.

122/132 mm

Acoustics (Rw)	52
Max Reachable Height (mm) with 70mm metal stud	4600
Insulation	50mm with 20Kg/m ³



240
min

Non-Loadbearing Wall System

Three layers of 15mm Gyproc® Fireline Board applied Vertically to either side of minimum 70mm x 0.5mm G.I. Twin Metal Framing spaced at 610mm center to center.

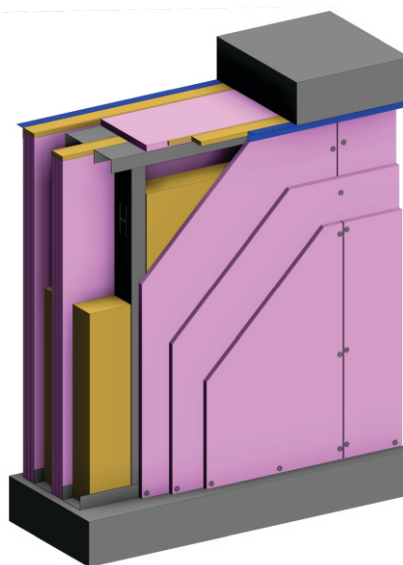
279 mm

Acoustics (Rw)	60
Max Reachable Height (mm) with 70mm metal stud	4900
Insulation	50mm with 20Kg/m ³

Three layers of 15mm Gyproc® Fireline Board applied Vertically to either side of 146mm x 0.9mm G.I. Twin Metal Framing spaced at 407mm center to center.

431 mm

Acoustics (Rw)	66
Max Reachable Height (mm) with 70mm metal stud	11000
Insulation	50mm with 20Kg/m ³



Gyproc Fire Rated Wall Systems

30
min

Suspended Ceiling System

M/F Suspended Ceiling - One layer of 15mm Gyproc® Fireline Board suspended with help of Gyproc's Metal systems

60
min

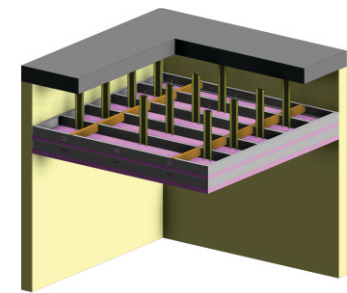
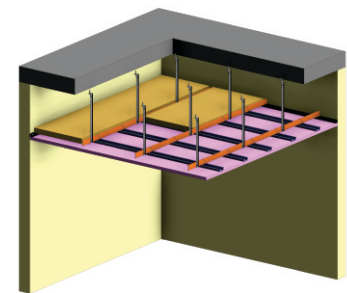
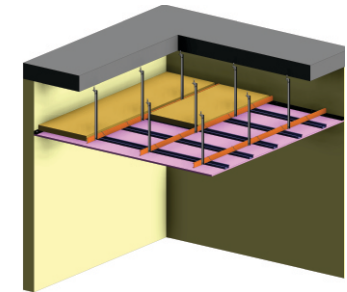
Suspended Ceiling System

M/F Suspended Ceiling - Two layer of 15mm Gyproc® Fireline Board suspended with help of Gyproc's Metal systems

120
min

Suspended Ceiling System

M/F Suspended Ceiling - Five layer of 15mm Gyproc® Fireline Board suspended with help of Gyproc's Metal systems



120 Minutes FIRE RATED SHAFTWALL

19mm Gyproc® Core Board & 15mm Gyproc® Fireline Board

